

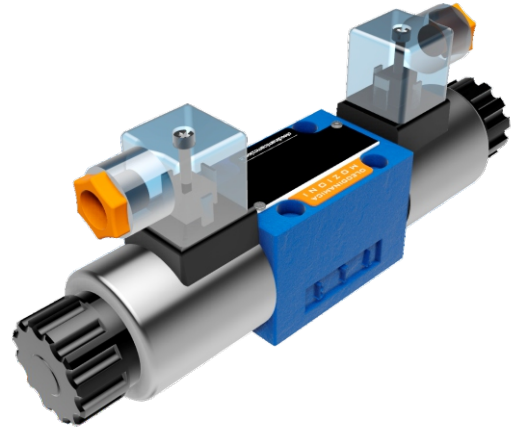


**DISTRIBUTORI
OLEODINAMICI**

WE6

**SOLENOID OPERATED
DIRECTIONAL CONTROL VALVES**

WE6 SERIES DIRECTIONAL CONTROL VALVES ARE SOLENOID OPERATED DIRECTIONAL SPOOL VALVES. THESE VALVES ARE USED TO THE START, STOP AND DIRECTION OF FLOW.

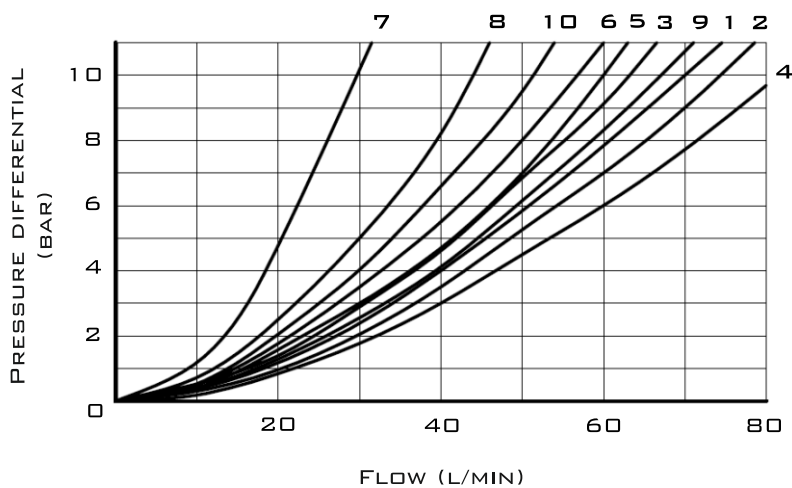


TECHNICAL DATA

SIZE		6
MAX. FLOW RATE (L/MIN)		80
OPERATING PRESSURE (MPA)	A, B, P PORTS	31.5
	T PORT	16
WEIGHT (KG) WITHOUT/WITH HANDLE	1 SOLENOID	1.6/2.2
	2 SOLENOIDS	2.2/2.8
VALVE BODY (MATERIAL)		CASTING PHOSPHATING SURFACE

CHARACTERISTIC CURVES

$\Delta P-Q$ CHARACTERISTIC CURVES



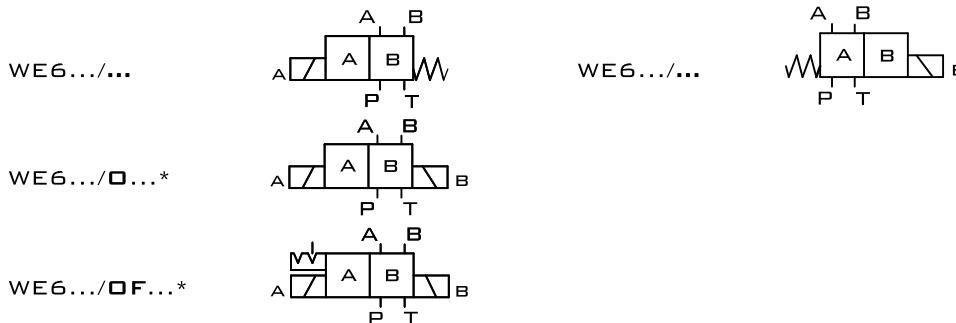
SPOOL SYMBOL	FLOW DIRECTION			
	P - A	P - B	A - T	B - T
A, B	3	3	-	-
C	1	1	3	1
D, Y	5	5	3	3
E	3	3	1	1
F	1	3	1	1
G	6	6	9	9
H	2	4	2	2
J, Q	1	1	2	1
L	3	3	4	9
M	2	4	3	3
P	3	1	1	1
R	5	5	4	-
T	10	10	9	9
U	3	3	9	4
V	1	2	1	1
W	1	1	2	2

7 CURVE - SPOOL SYMBOL "R" IN SHIFTED POSITION B → A;
8 CURVE - SPOOL SYMBOL "G" AND "T" IN CENTRAL POSITION;
9 CURVE - SPOOL SYMBOL "H" AND "T" IN CENTRAL POSITION P → T.



SCHEMES

**SCHEMES OF 2-POSITION DIRECTIONAL SPOOL VALVES
VERSIONS WITH POSITIONS A, B**



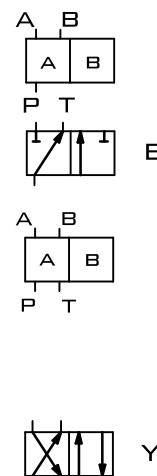
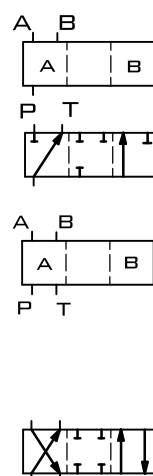
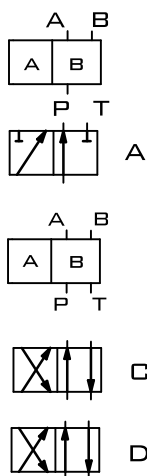
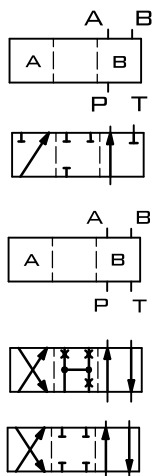
* - VERSIONS AVAILABLE ONLY FOR SPOOL SCHEMES: A, C, D

**WORKING AND
INDIRECT POSITIONS**

**WORKING
POSITIONS**

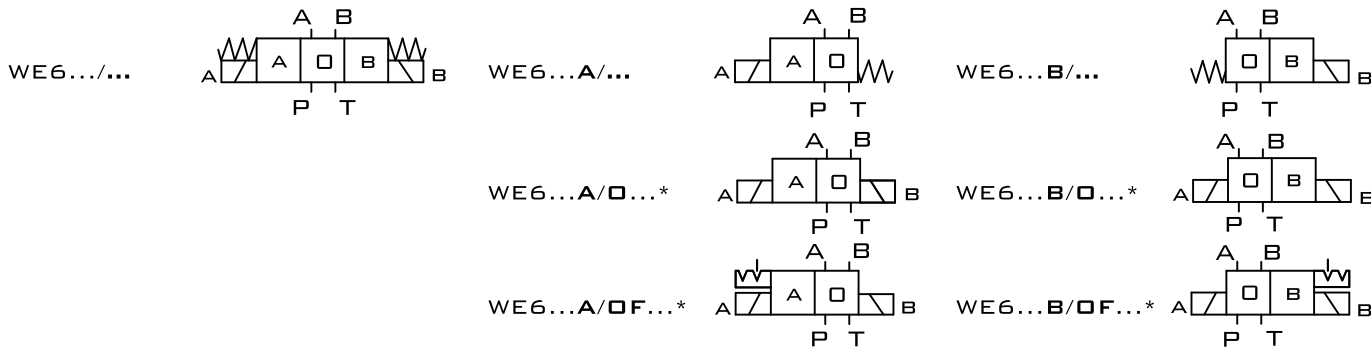
**WORKING AND
INDIRECT POSITIONS**

**WORKING
POSITIONS**



**SCHEMES OF 3-POSITION
DIRECTIONAL SPOOL VALVES**

**SCHEMES OF 2-POSITION DIRECTIONAL SPOOL VALVES
VERSIONS WITH POSITIONS A, O VERSIONS WITH POSITIONS O, B**



* - VERSIONS AVAILABLE ONLY FOR SPOOL SCHEMES: EA, GA, HA, JA, MA, EB, GB, HB, JB, MB

**SEE ALSO:
WE10, WEH**

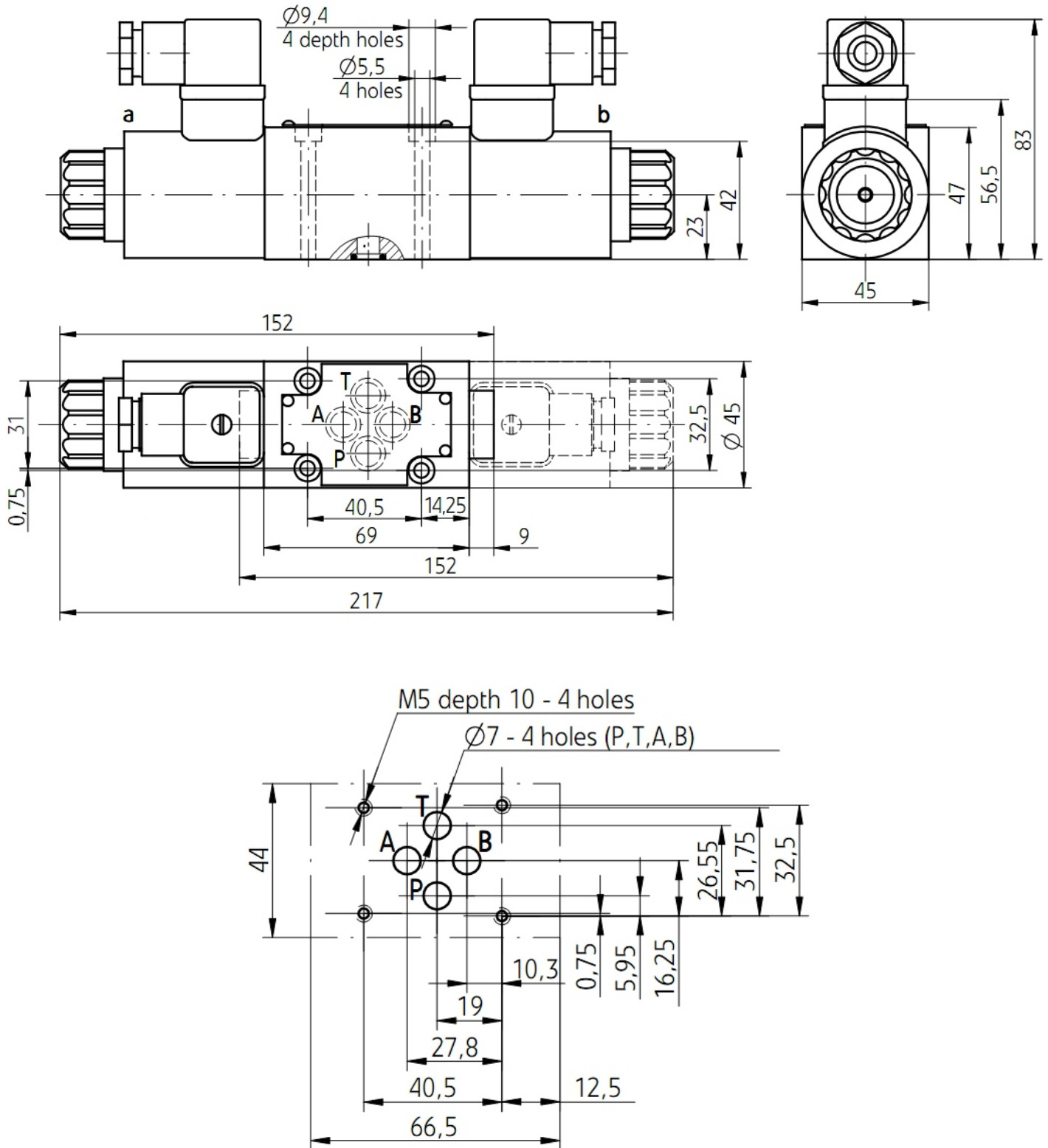
SCHEMES

HYDRAULIC SCHEMES OF SPOOLS

WORKING AND INDIRECT POSITIONS	WORKING POSITIONS	WORKING AND INDIRECT POSITIONS	WORKING POSITIONS	WORKING AND INDIRECT POSITIONS	WORKING POSITIONS

* - FLOW SECTION FOR SPOOL W IN CENTRAL POSITION: 3 % NOMINAL FLOW

SUBPLATE INSTALLATION DIMENSIONS





DISTRIBUTORI
OLEODINAMICI

WE6

SOLENOID OPERATED
DIRECTIONAL CONTROL VALVES

ORDER CODE

	WE	6				E						
--	----	---	--	--	--	---	--	--	--	--	--	--

3=3-WAY
4=4-WAY

6=6 SIZE

SPOOL TYPE

6X=60-69 SERIES

NO CODE=WITH SPRING RETURN
□=WITHOUT SPRING RETURN
□F=WITHOUT SPRING RETURN
WITH DETENT

E=STANDARD SOLENOID

NO CODE=NBR SEALS
V=FKM SEALS

Z5L=SQUIRE PLUGS WITH LAMP

NO CODE=WITHOUT THROTTLE INSERT
B0.8=THROTTLE 0.8 MM
B1.0=THROTTLE 1.0 MM
B1.2=THROTTLE 1.2 MM

N9=WITH CONCEALED HAND EMERGENCY

G12=DC12V
G24=DC24V
W110R=AC110V
W220R=AC220V